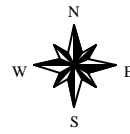


# RUTLAND TOWN

## Change in Septic Suitability 1997 to 2003

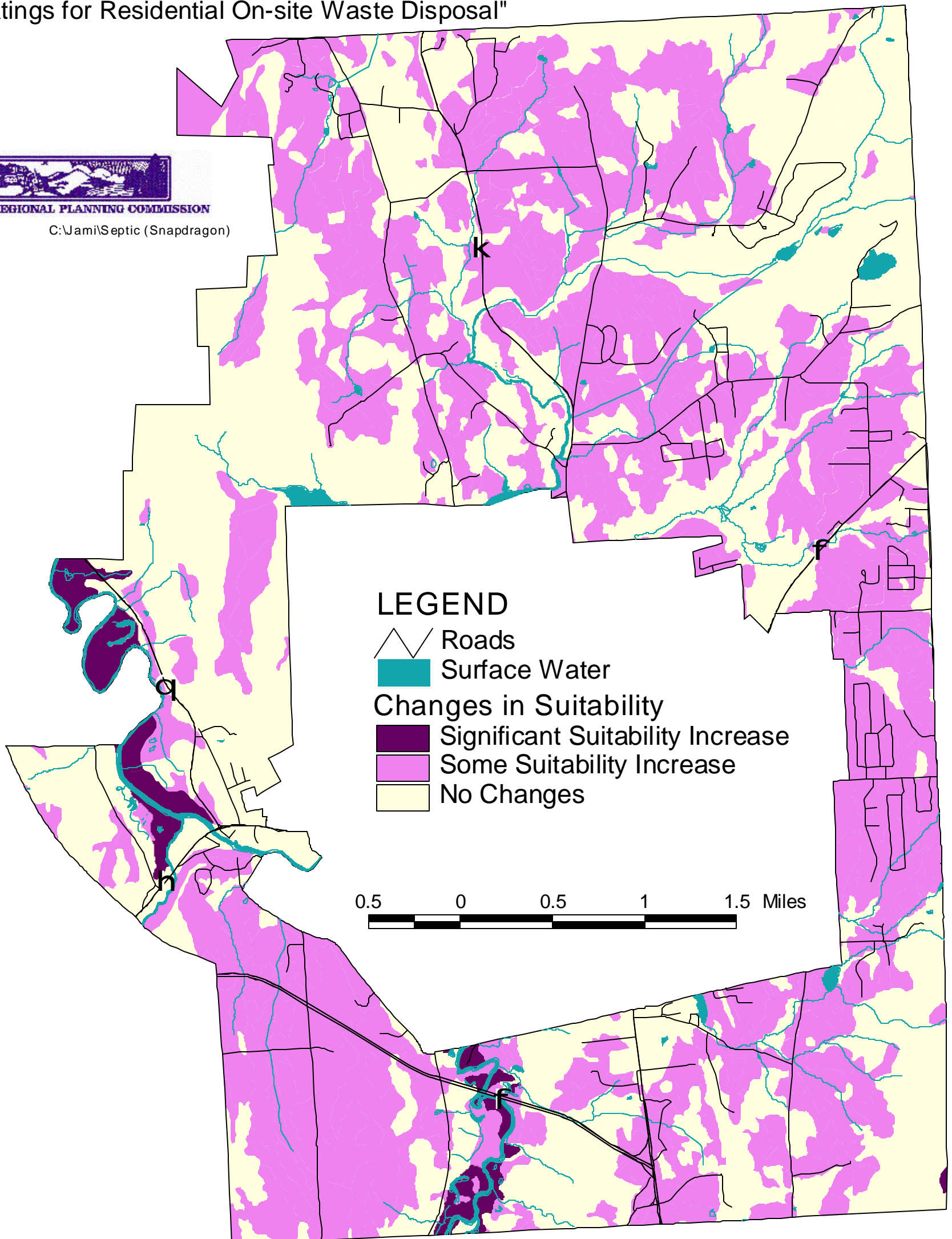
"Soil Ratings for Residential On-site Waste Disposal"



RUTLAND REGIONAL PLANNING COMMISSION

January 2004

C:\Jami\Septic (Snapdragon)



NOTES: The soil classifications shown on this map have been developed by the Natural Resources Conservation Service (NRCS). Refer to: "Ancillary Soil Interpretation Ratings of On-Site Sewage Disposal in Vermont", 1997 and its replacement "Ancillary Soil Ratings for Residential On-Site Waste Disposal in Vermont", 2003 (Draft version). This map is intended for planning purposes only. It shows the changes, by soil map units, from the 1997 report to the 2003 report in on-site waste disposal characteristics of soil. It should not replace or supercede an on-site soil investigation. For more information on specific requirements and exemptions refer to the Agency of Natural Resources' report "Wastewater Systems and Potable Water Supply Rules", 2002. NRCS soil scientists map soils down to a three acre minimum, these areas may include a small area that has different soils than the dominant named soils.

The seven (7) categories of the 1997 reports were combined according to the definitions available to fit into the five (5) classes developed in the 2003 report. These classes include "Well, Moderately, Marginally and Not Suited". The last class was areas "Not Rated". The changes on this map demonstrate the changes in suitability within these five (5) classes. "Significant Increase" consists of areas where the suitability moved from Not Suited to Marginally Suited. "Some Increase" consists of those areas that moved up one (1) class (ie: Marginally to Moderately Suited). The suitability remained consistent in the areas mapped with "No Changes". Looking at Maps A and B, it may appear that some soils have changed, but do not show on this map. Closer examination of these soils reveals that they have not changed in their ability to support on-site waste disposal.